



*22nd Annual*  
**BULL &  
FEMALE  
SALE**

DIAMOND C RANCH

*Limousin*

**1:30 PM FRIDAY, MARCH 10, 2023**  
AT DIAMOND C RANCH WEST OF PONOKA, AB

PUT A DIAMOND IN YOUR HERD

# DIAMOND C RANCH

*Limousin*



1:30PM - FRIDAY, MARCH 10, 2023 - AT THE RANCH - WEST OF PONOKA, AB

## SALE DAY PHONES

Neil Christiansen 403-704-4403  
Sherry Christiansen 403-704-3978  
Annie Christiansen-Stewart 403-963-4779  
Bryce Stewart 403-740-2638  
Karen Skeels 403-704-4474

## SALE STAFF

AUCTIONEER Dan Skeels 403-783-1217  
RINGSIDE Joe Farris 250-558-8745  
RINGSIDE Terry Silbernagel 403-318-5873  
CONSULTANT Vold, Jones and Vold Auction Co.  
Dan Skeels 403-783-1217  
Craig Jacklin 403-783-1453  
BOHRSON MARKETING Jaxon Payne 306-830-0456  
BOHRSON MARKETING Martin Bohrson 306-220-7901  
Dean Edge 403-704-0280  
INSURANCE Jill Wildman 780-305-1146



## View and Bid Online

Can't make the sale? Join us online.  
Register at [www.vjvauction.com](http://www.vjvauction.com)  
by clicking the tab "Purebred Sale".  
Questions? Call Craig at 403-783-1453.

## SCHEDULE

Sunday, March 5 Open House, 1:00 p.m. - 5:00 p.m.  
Friday, March 10 Viewing starting at 10:00 a.m.  
Lunch at noon  
Video sale at 1:30 p.m.

## LOCATION

15 minutes west from the Queen Elizabeth Highway 2,  
on Highway 611 to Range Road 282, then ½ a mile south.

## VIEW AND BID ONLINE

The sale itself will feature video only; no live bulls will go through the ring. Please come ahead of time to evaluate the bulls, which will be located right outside the sale barn. Videos will be on our website as well as on [www.vjvauction.com](http://www.vjvauction.com)

## ACCOMMODATIONS

Ponoka Super 8 Hotel 403-704-1177  
Village Creek Country Inn, Pigeon Lake 1-877-688-0006

## SEMEN COLLECTION

Diamond C reserves the right to collect 100 straws of semen on any sale bull, at the owner's convenience and Diamond C's expense.



## THE CHRISTIANSEN'S

NEIL & SHERRY, BRAEDEN & SARA  
BRYCE & ANNIE STEWART

Box 4511, Ponoka, AB T4J 1S1

NEIL: 403.704.4403

ANNIE: 403.963.4779 BRYCE: 403.740.2638

EMAIL: [christiansenanniec@gmail.com](mailto:christiansenanniec@gmail.com)

[www.DIAMONDCRANCHLIMOUSIN.com](http://www.DIAMONDCRANCHLIMOUSIN.com)



# *Welcome to our 22nd Anniversary Sale*

Gratitude. This is our overwhelming feeling as we write our welcome to our 22nd Bull & Female Sale. Thank you to our family, friends and community for your support, love and prayers over the past year as we navigated through Annie's cancer journey. To date, Annie has completed her stem cell treatments and is recovering from that process. We are so happy that she is out of the hospital and able to work alongside Neil to take the photos and put together the catalog. We are also pumped that our son Braeden was able to finish his fourth year of his Ag Mechanic Apprenticeship this Fall and is now a Journeyman doing what he loves at John Deere. We are grateful for every day that we get to live our best life and do what we love.

And what we love is the ranch way of life and working towards a sustainable future in the cattle industry. We once again have done our very best to bring you high quality bulls. As before, there is a selection of performance bulls, heifer bulls, yearlings, two-yr olds, limousin and limflex in our offering.

For the past several years we have been retaining heifers and building our herd. New in this year's offering is the addition of some of our quality females. It's been many years since we have offered up some high end genetics from the top of our herd. These heifers would have been out on the road last Fall if we had been able to show.

Our bull numbers are on par with previous years, however, because of the increase in our cow numbers you will see more bulls in future offerings. We are excited about the future at Diamond C Ranch and thrilled that Bryce and Annie are working alongside us to continue on with our purebred program.

Our cows are loved and cared for, but not pampered. We have a team of professionals that we work with to keep them in top shape: Doug Roxburg at Bullseye Nutrition and Dr. Kelly Loree at Central Vet Clinic in Ponoka are partners in our herd health program.

We invite you to give us a call and schedule a tour of the bull & heifer pen. Our formal open house is a week before our sale on Sunday, March 5 from 1-5 pm. Mark our new sale date on your calendars, Friday, March 10. Come for some Diamond C Ranch brisket from 12 -1:00pm and the sale at 1:30pm.

**Put a Diamond in your herd!**  
**Neil & Sherry, Braeden & Sara, Bryce & Annie**

## *How to Participate in our Diamond C Sale this year...*

We have 3 options available for you to be part of the sale:

1. **In Person Bidding** – You're always welcome to attend our sale in person! We'll provide lunch at 12 PM with lots of space for social distancing, servers and sanitizer. The sale will follow at 1:30 PM.
2. **Internet Bidding** - We are happy to again be working with VJV who handles all our online bidding at [www.vjvauction.com](http://www.vjvauction.com). You can log in there to bid on the sale offerings.
3. **Phone Bidding** – We will have a capable team available on sale day to take your call. Their phone numbers are listed in the front of the catalog. If possible, please let Neil or Annie know in advance, so that we can coordinate callers and be available for you.

**Note:** If you are unable to attend the sale in person and are going to use any of the off-site options, we recommend that you watch the videos of each individual bull on our website, [www.diamondcranchlimousin.com](http://www.diamondcranchlimousin.com). Give us a call and we will go over the offering with you and help you select the bulls that fit your needs.

If you would like to stop by and preview the bulls, we are happy to arrange time that is convenient. We again will be hosting an **Open House on Sunday, March 5 from 1-5 pm** to give more time for bull reflection.

So with that, we invite you to our **22nd Annual Diamond C Bull & Female Sale at 1:30 pm, Friday, March 10, 2023.**

## *Diamond C Docility Score (DS)*

Temperament is a big deal to us and we strive to raise cattle that are easy to handle. We decided to do this docility score to help better inform you of each animals disposition. Every animal at Diamond C is handled often throughout their lifetime, which gives us opportunity to score them one on one. Each sale animal has been given a rating based off of what we believe best fits their temperaments.

1. **Calm all the time** - We consider these to be pets.
2. **Easily Handled** - These cattle are calm but will move away/around you when being worked.
3. **Average** - These cattle have a typical disposition. They can get impatient when being worked but are overall even-tempered.
4. **Restless** - These animals like to stay in a group or with a buddy. They are very impatient and restless when worked alone.
5. **Nervous** - Even when worked in a group, these cattle can be nervous.
6. **Aggressive** - Any aggressive behaviour is culled immediately.



# Herd Health & Nutrition

## Nutrition

During the winter months, cows and bred heifers are fed corn silage. Mineral is supplied in the ration as well as free choice trace mineral salt with selenium. In addition, straw is also supplied in the ration as well as free choice. This is to ensure their rumen is working well and to add extra calcium into their diet. In the summer, the cows are moved to paddocks where they graze usually until weaning.

Bulls are grown out slowly, so they will last for you. This year they are being fed a mixture of cereal silage and corn silage, with the addition of oats and barley grain. They are started on this ration in September. After the bull sale they are taken slowly off of the grain, so as to get them ready to transition to grass. Two-year-old bulls are lightly backgrounded the first winter and go to grass until September. Then they are brought home and started on their sale ration. The yearling bulls are targeted for a 1250 lbs. yearling weight average at bull sale day.

## Disease Prevention and Animal Care

All of the animals are cared for with the utmost quality. Cattle always have access to shelter or wind fences. They are not overcrowded and have room to move around freely for exercise. When an animal is stressed, they are brought in and dealt with promptly in an appropriate, ethical manner.

We work closely with Dr Kelly Loree of Central Vet Clinic in Ponoka. He oversees Diamond C Ranch herd health and has been involved with us for many years.

## Our vaccination program is as follows:

### Calves First 24 hours

Inforce 3  
Vision 8

### Approx. 3 months

Pyramid FP5 plus Presponse  
Vision 8 Somnus

### Heifers Pre Breeding

Express FP5  
Vision 8 Somnus

### Fall

Scour Bos 9

### Prior to calving

Scour Bos 9

### Cows Pre Breeding

Express FP5  
Vision 8

### 8 weeks prior to calving

Scour Bos 9

### Sale Bulls Approx. 1 Year

Express FP5  
Vision 8

### Herd Bulls Pre Breeding

Express FP5  
Vision 8

## Weaning Dates

Yearlings: August 20, 2022

Two Year Olds: November 10, 2021

Current Weights: January 19, 2023



**Central Veterinary Clinic**

4102 - 64 Street Ponoka, AB T4J 1J8 Phone: 403-783-5200 Fax: 403-783-3160

"I have worked with Neil and Sherry at Diamond C Ranch for many years and I have always found them to be extremely dedicated and conscientious managers. Their animal care and attention to detail is second to none and they are always seeking ways to improve their program. I have been consistently impressed by the quality of the Diamond C animals and I wouldn't hesitate to recommend them to anyone."

Sincerely,  
Dr. Kelly Loree DVM

## Breeding Soundness, Bull and Female Evaluation

There are many bulls in this year's lineup that are at the very top of the Limousin breed or cattle industry and will definitely enhance your program.

We calve two groups of females. Group one calves in January/February and these calves are weaned near the end of August. The bulls from this group are retained and make up the yearling bulls for our sale. Group two calves in April/May and are weaned near the end of November. The bulls from this group make up the majority of bulls in the two-year-old pen.

All bulls are evaluated for breeding and structural soundness, as well getting scrotal measurements and evaluated for sperm quality. All are required to pass with 70% soundness. A copy of breeding soundness will be provided with your bill of sale.

In the event of a deferred decision, only half of the purchase amount will be required on sale day. The other half is due when the bull passes his evaluation. In an event he does not pass his test, all money will be reimbursed to the purchaser.

Females are evaluated for structural soundness and are tracked to watch productivity. Females that do not measure up are removed from the herd.

## Doug Roxburgh

Beef Consultant

(403) 392-4541

doug.roxburgh@bullseyefeeds.ca



© More Than Just Feed

It's always interesting to visit with producers each year at their bull pen. Chatting with the crew at Diamond C Limousin there is some added excitement this year in their yearling bulls. Certainly not to take away anything from the big strapping set of coming 2 year olds that I myself have always been extremely impressed with.

Back in the fall we tested the on farm forages and built specific diets for the developing bulls. Forage quality was very good at Diamond C. We were able to blend on farm forages with some added grain and a custom bull mineral package to develop these bulls to their best genetic potential.

The bulls are developed on grass during the summer months and then moved onto a balanced TMR that promotes lean muscle. The bulls are challenged with a foraged based TMR to help them develop to their genetic potential. Organic minerals are used to ensure proper immune function and overall health. If you have any questions about the nutrition of the sale bulls, please feel free to call.

Best of luck on sale day!

**Photography:** ACphotography

# Reference Sires

## Diamond C Goldmember NSC 60G



As soon as this bull was born we had high hopes for Diamond C Goldmember. His sire, Diamond C Earthquake, is a tremendous breeding bull carrying the genetics of the great Braveheart. Earthquake is still working hard for Crest Hills Cattle Company of Provost. Goldmember's dam is Diamond C Zaharra who is one of our top cows and the mating was perfect. He is homo-polled, long spined, deep bodied and has exceptional muscle. He sires quiet progeny that have thickness, great hair coats and great feet. His females so far are fantastic and have lots of milk. We have used Goldmember heavily and he has not disappointed. Again, he saw the lions share of our early group. We hope to have him walking our pastures for a long time. **Reference Sire of Lots 2-9, 14, 16, 23-25, 27-29, 31, 34, 36, 42-44, 46.**

## Diamond C Gold Rush NSC 36G



Diamond C Gold Rush is a herd sire we raised. He was the lead bull calf out of our first calving group in 2019. His sire is Greenwood Double Down and he is out of a beautiful Final Time daughter. He was the best son out of Double Down. He's homo-polled, has tons of middle and muscle, moves very well and has lots of depth of heel on his feet. He is a very good footed bull and you can expect that with his progeny. He is super quiet and he throws that as well. This guy was a Diamond C Ranch keeper and we hope to be selling sons from him for a long time. **Reference Sire of Lots 11, 15, 35, 47.**

## Diamond C Exciter NSC 63E



Exciter is arguably the best son out of the awesome bull Diamond C Way Cool. He was our best bull out of the 2018 calf crop and is out of a dam who had a picture perfect udder. He excelled in every area and we are thrilled with his offering. He was hetero-polled, hence why some of his sons are horned: a small sacrifice on moving forward with excellence. Unfortunately, there will not be many more sons from him as we lost him due to an injury. **Reference Sire of Lots 26, 30, 38.**

## Diamond C Groot NSC 46G



Diamond C Groot is another great herdsire we raised. His dam, Diamond C Enchanted is a girl we think very highly of and she goes back to the cow family of our great Diamond C Angelina. In 2019 Enchanted had twin bull calves. As a first calf heifer she raised them on her own and did a great job. We decided to keep Groot and use him on our own heifers while his brother, Gus, sold in the sale to Kevin Galloway. Groot is homo-polled, deep bodied and has great muscle expression. His calves possess many of his, as well as his dams attributes and we are very happy with them. **Reference Sire of Lots 13, 18-22, 32, 33, 45.**



LOT 1



DIAMOND C *Groot*

1

NSC 46G CPM4106338 23/03/2019

PERCENTAGE  
94% PB  
SPH  
HOMO POLLED (T)  
COLOUR  
RED  
DS  
2

DC XCALIBUR  
**SIRLOIN CANDID**  
SIRLOIN YIELDER 82Y

RICHMOND CRUSADER SRD 53C  
**DIAMOND C ENCHANTED**  
DIAMOND C CINDERELLA

ROMN TOW TRUCK 111T  
DC POLLED LIQUORISH  
DIAMOND C RAZZMATAZZ  
SIRLOIN SASSAFRAS

RICHMOND ZODIAC SRD 29Z  
RICHMOND ZANDY SRD 49Z  
WULFS ZERO TURN X292Z  
DIAMOND C ANGELINA

Diamond C Groot is a bull we think very highly of. We have used him for the past few years but it is time to let him go to another herd since we now have lots of his genetics. We used Groot on heifers and he calved nicely. He was a twin out of one of our show cows, Diamond C Enchanted. A cow family that goes back to Diamond C Angelina. You will see some of his progeny in this sale offering. We are very impressed with his calves. We will miss Groot walking our pastures but we know he will go on and continue to do great things in another herd.  
- He is homo polled.

PERF	BW	ADJ 205D	WW	ADJ 365D	EPDS	BW	WW	YW	MILK
	60	625	660	1025		0.5	43	65	19



Dam - NSC 11E Diamond C Enchanted



Great Grand Dam - NSC 5A Diamond C Angelina



LOT 2



DIAMOND C *Kingsman*

2

NSC 5K      CPM4117642      01/01/2022

PERCENTAGE  
95% PB  
SPH  
HOMO POLLED  
COLOUR  
RED  
DS  
2

DIAMOND C EARTHQUAKE  
**DIAMOND C GOLDMEMBER**  
DIAMOND C ZAHARRA

GREENWOOD DOUBLE DOWN ET  
**DIAMOND C GIGI**  
DIAMOND C ZETTA

DIAMOND C BRAVEHEART  
DIAMOND C YOLANDA  
DIAMOND C WEAPON  
WISECAN PHOEBE

RPY PAYNES DERBY 46Z  
GREENWOOD WISTERIA LANE  
DIAMOND C WEAPON  
DIAMOND C SUGAR SUGAR

- Lots of performance in this young herd sire
- Dark cherry red
- Deep bodied with lots of muscle expression
- He is homo polled.
- **Terms and conditions to be announced on sale day**

PERF	BW	ADJ 205D	WW	ADJ 365D	EPDS	BW	WW	YW	MILK
90	703	740	1187		2.4	70	106	23	



LOT 3



DIAMOND C *Kebra*

3

PERCENTAGE  
94% PB  
SPH  
HOMO POLLED  
COLOUR  
BLACK  
DS  
2

NSC 7K

CPM4117643

02/01/2022

DIAMOND C EARTHQUAKE  
**DIAMOND C GOLDMEMBER**  
DIAMOND C ZAHARRA

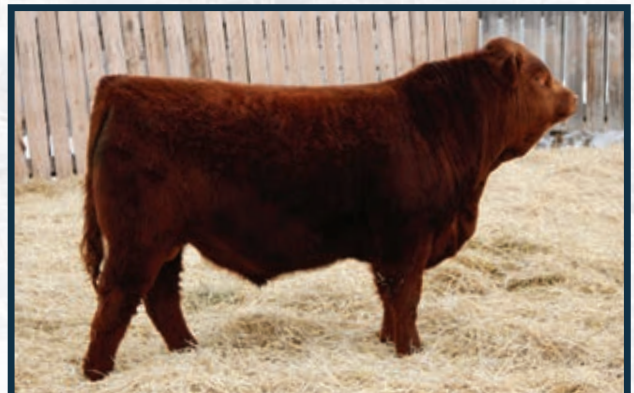
GREENWOOD DOUBLE DOWN ET  
**DIAMOND C FALLON**  
DIAMOND C CARLINA

DIAMOND C BRAVEHEART  
DIAMOND C YOLANDA  
DIAMOND C WEAPON  
WISECAN PHOEBE

RPY PAYNES DERBY 46Z  
GREENWOOD WISTERIA LANE  
DIAMOND C ZEPPLIN  
DIAMOND C WILDCHILD

- Tons of performance
- Very well balanced
- A maternal brother to our high selling bull in the 2022 sale (Diamond C Jazz Man, sold to Lazy S Limousin)
- His grand dam "Diamond C Carlina" is the dam of Lot 43. Expect great females
- He is homo polled.
- **Diamond C will be retaining 100 straws of semen for in herd use. At Diamond C's expense and owners convenience.**

PERF	BW	ADJ 205D	WW	ADJ 365D	EPDS	BW	WW	YW	MILK
	90	733	790	1259		2.4	74	114	30



Maternal Brother - NSC 6J Diamond C Jazz Man Sold to Lazy S Limousin



LOT 4



DIAMOND C *Kraken*

4

NSC 14K CPM4117646 06/01/2022

PERCENTAGE  
94% PB  
SPH  
SCURRED  
COLOUR  
RED  
DS  
2

DIAMOND C EARTHQUAKE  
**DIAMOND C GOLDMEMBER**  
DIAMOND C ZAHARRA  
  
WULFS ZERO TURN X292Z  
**DIAMOND C CECELIA**  
DIAMOND C PLEASURE SEEKER

DIAMOND C BRAVEHEART  
DIAMOND C YOLANDA  
DIAMOND C WEAPON  
WISECAN PHOEBE  
  
WULFS UPGRADE 0500U  
WULFS MYRENE 2332M  
DJ GENTLEMAN IN BLACK  
SRD LABELLE OF THE BALL

PERF	BW	ADJ 205D	WW	ADJ 365D	EPDS	BW	WW	YW	MILK
95	730	795	1204		1.5	68	96	28	

- Medium framed cow bull
- Nice disposition
- Lots of performance

DIAMOND C *Kryptonite*

5

NSC 15K CPM4117647 08/01/2022

PERCENTAGE  
96% PB  
SPH  
HETERO POLLED  
COLOUR  
RED  
DS  
2

DIAMOND C EARTHQUAKE  
**DIAMOND C GOLDMEMBER**  
DIAMOND C ZAHARRA  
  
DIAMOND C WEAPON  
**DIAMOND C ZETTA**  
DIAMOND C SUGAR SUGAR

DIAMOND C BRAVEHEART  
DIAMOND C YOLANDA  
DIAMOND C WEAPON  
WISECAN PHOEBE  
  
DIAMOND C SUPERMAN  
DIAMOND C SAVANNAH  
DIAMOND C PERFECTGENTLEMAN  
ANLC LUCILLE 1264L

PERF	BW	ADJ 205D	WW	ADJ 365D	EPDS	BW	WW	YW	MILK
94	651	700	1167		2.1	63	91	24	

- A powerful Goldmember son
- Nice temperament
- His dam has raised us lots of stand out calves over the years

LOT 5





LOT 6



DIAMOND C *Kaze*

**6**

PERCENTAGE  
48% PB

SPH  
HOMO POLLED

COLOUR  
RED

DS  
2

NSC 10K CXM4117644 04/01/2022

DIAMOND C EARTHQUAKE  
**DIAMOND C GOLDMEMBER**  
DIAMOND C ZAHARRA

DIAMOND C BRAVEHEART  
DIAMOND C YOLANDA  
DIAMOND C WEAPON  
WISECAN PHOEBE

- Lots of performance
- Actual limo blood would be 94%
- A heavy muscled Goldmember son
- Long bodied
- He is homo polled.

**DIAMOND C DEANNE**

PERF	BW	ADJ 205D	WW	ADJ 365D	EPDS	BW	WW	YW	MILK
95	636	695	1157		2.5	67	95	20	



**NSC 60G Diamond C Goldmember out working with his girls.**



LOT 7



DIAMOND C *Kade*

7

NSC 30K CPM4117653 19/01/2022

PERCENTAGE  
94% PB  
SPH  
DOUBLE POLLED  
COLOUR  
BLACK  
DS  
2

DIAMOND C EARTHQUAKE  
**DIAMOND C GOLDMEMBER**  
DIAMOND C ZAHARRA  
  
GREENWOOD DOUBLE DOWN ET  
**DIAMOND C FAME**  
DIAMOND C CAPRICORN

DIAMOND C BRAVEHEART  
DIAMOND C YOLANDA  
DIAMOND C WEAPON  
WISECAN PHOEBE  
  
RPY PAYNES DERBY 46Z  
GREENWOOD WISTERIA LANE  
DIAMOND C WAYLON  
HUNTKISSES AND WISHES 29W

PERF	BW	ADJ 205D	WW	ADJ 365D	EPDS	BW	WW	YW	MILK
93	705	710	1179		2	69	102	23	

- A long bodied power bull
- Nice temperament
- Medium framed

DIAMOND C *Kevin*

8

NSC 34K CPM4117656 21/01/2022

PERCENTAGE  
95% PB  
SPH  
HOMO POLLED  
COLOUR  
BLACK  
DS  
2

DIAMOND C EARTHQUAKE  
**DIAMOND C GOLDMEMBER**  
DIAMOND C ZAHARRA  
  
GREENWOOD DOUBLE DOWN ET  
**DIAMOND C GALWAY GIRL**  
DIAMOND C CLASSY GIRL

DIAMOND C BRAVEHEART  
DIAMOND C YOLANDA  
DIAMOND C WEAPON  
WISECAN PHOEBE  
  
RPY PAYNES DERBY 46Z  
GREENWOOD WISTERIA LANE  
DIAMOND C ZEPPLIN  
DIAMOND C ZETTA

PERF	BW	ADJ 205D	WW	ADJ 365D	EPDS	BW	WW	YW	MILK
78	562	540	1078		0.3	56	84	22	

- Deep bodied
- Nice disposition
- Good cow family
- He was a twin
- He is homo polled.

LOT 8





LOT 9



DIAMOND C *Klaus*

9

NSC 40K CXM4117659 30/01/2022

PERCENTAGE  
71% PB  
SPH  
HOMO POLLED  
COLOUR  
RED  
DS  
2

DIAMOND C EARTHQUAKE  
**DIAMOND C GOLDMEMBER**  
DIAMOND C ZAHARRA

GREENWOOD DOUBLE DOWN ET  
**DIAMOND C GENNA**  
DIAMOND C DEANNE

DIAMOND C BRAVEHEART  
DIAMOND C YOLANDA  
DIAMOND C WEAPON  
WISECAN PHOEBE  
RPY PAYNES DERBY 46Z  
GREENWOOD WISTERIA LANE

PERF	BW	ADJ 205D	WW	ADJ 365D	EPDS	BW	WW	YW	MILK
88	702	660	1228		2.2	72	106	23	

- Good disposition
- Medium framed
- A performance bull
- He is homo polled.

DIAMOND C *Knox*

10

BAS 111K CPM4118332 12/02/2022

PERCENTAGE  
93% PB  
SPH  
HOMO POLLED  
COLOUR  
RED  
DS  
2

COTTAGE LAKE BORDER AGENT  
**BOSS LAKE BORDER AGENT 967G ET**  
GREENWOOD PLD ZOOM BLOOM

DIAMOND C BRAVEHEART  
**DIAMOND C EUNICE**  
DIAMOND C BETHANY

CFLX WILD CARD  
LAL MARILYN MONROE 42W  
WULFS REVOLVER 1219R  
GREENWOOD PLD TALKINDIRTY  
EXCEL POLLED POPEYE  
DIAMOND C UNDIEN  
DIAMOND C ZEPPLIN  
WISECAN PHOEBE

PERF	BW	ADJ 205D	WW	ADJ 365D	EPDS	BW	WW	YW	MILK
93	725	670	1199		3.5	66	95	20	

- Very deep bodied
- Out of a great cow family, keep all the females you can out of this guy
- Good disposition
- He is homo polled.

LOT 10





LOT 11



DIAMOND C *King*

DIAMOND C *Kota*

11

12

NSC 46K CPM4117660 20/02/2022

BAS 162K CPM4118333 04/03/2022

PERCENTAGE  
95% PB  
SPH  
HOMO POLLED  
COLOUR  
RED  
DS  
2

PERCENTAGE  
94% PB  
SPH  
HOMO POLLED  
COLOUR  
RED  
DS  
2

GREENWOOD DOUBLE DOWN ET  
**DIAMOND C GOLD RUSH**  
DIAMOND C YOLANDA

RPY PAYNES DERBY 46Z  
GREENWOOD WISTERIA LANE  
HC FINAL TIME 407  
RIVERSIDE LADYBIRD 19L

AMAGLEN CANADIAN SUNRISE  
**AMAGLEN FOUNDATION**  
AMAGLEN XOXOXO

WULFS XTRACTOR X233X  
AMAGLEN TEASER LADY  
AMAGLEN THROTTLE  
AMAGLEN GRACE

QUALLY-T CAPTAIN AMERICA  
**QUALLY-T GIN RUMMY**  
QUALLY - T ZABRIELLA

WULFS XTRACTOR X233X  
QUALLY-T PEBBLES  
STONEVIEW UTMOST  
QUALLY-T TRISCUT

777 CATTLE EL DORADO  
**SIRLOIN GALLOWAY GIRL 151G**  
MURPHY'S 22C

DIAMOND C BRAVEHEART  
DIAMOND C WEDDING CRASHER  
WULFS XTRACTOR X233X  
MURPHY'S 37Z

PERF	BW	ADJ 205D	WW	ADJ 365D	EPDS	BW	WW	YW	MILK
	92	675	575	1122		2.8	66	94	21

PERF	BW	ADJ 205D	WW	ADJ 365D	EPDS	BW	WW	YW	MILK
	90	695	560	1137		3.9	62	90	21

- Moderate framed
- Nice temperament
- Lots of muscle expression
- He is homo polled.

- Good disposition
- Medium framed
- He is homo polled.

LOT 12





LOT 13

*Limflex*



DIAMOND C *Kane*

13

NSC 47K CXM4117661 23/02/2022

PERCENTAGE  
82% PB  
SPH  
HOMO POLLED  
COLOUR  
RED  
DS  
2

SIRLOIN CANDID  
**DIAMOND C GROOT**  
DIAMOND C ENCHANTED

DIAMOND C EXCITER  
**DIAMOND C HAVANA**  
DIAMOND C ELECTRIC LADY

DC XCALIBUR  
SIRLOIN YIELDER 82Y  
RICHMOND CRUSADER SRD 53C  
DIAMOND C CINDERELLA

DIAMOND C WAY COOL  
DIAMOND C BRENDA  
DMM STACHE 14C  
DIAMOND C ANGELINA

PERF	BW	ADJ 205D	WW	ADJ 365D	EPDS	BW	WW	YW	MILK
90	673	550	1126		3.2	60	92	19	

- Very deep bodied
- Great cow family
- Nice hair coat
- He is homo polled.

DIAMOND C *Kip*

14

NSC 13K CPM4117652 06/01/2022

PERCENTAGE  
95% PB  
SPH  
HOMO POLLED  
COLOUR  
RED  
DS  
3

DIAMOND C EARTHQUAKE  
**DIAMOND C GOLDMEMBER**  
DIAMOND C ZAHARRA

DIAMOND C BOB SEGER  
**DIAMOND C DAISEY**  
DIAMOND C U-BETCHA

DIAMOND C BRAVEHEART  
DIAMOND C YOLANDA  
DIAMOND C WEAPON  
WISECAN PHOEBE

AHCC WESTWIND W544  
DIAMOND C ZAHARRA  
DIAMOND C ZEPPLIN  
PINNACLE'S SHOW GIRL

PERF	BW	ADJ 205D	WW	ADJ 365D	EPDS	BW	WW	YW	MILK
96	645	700	1098		2.8	70	104	21	

- Well balanced
- Long bodied
- He is homo polled.

LOT 14





LOT 15



DIAMOND C *Kaiser*

DIAMOND C *Kung Fu*

**15**

PERCENTAGE  
94% PB

SPH  
HOMO POLLED

COLOUR  
RED

DS  
2

**16**

PERCENTAGE  
96% PB

SPH  
HETERO POLLED

COLOUR  
BLACK

DS  
3

NSC 22K CPM4117651 12/01/2022

GREENWOOD DOUBLE DOWN ET  
**DIAMOND C GOLD RUSH**  
DIAMOND C YOLANDA

RICHMOND CRUSADER SRD 53C  
**DIAMOND C ENCHANTED**  
DIAMOND C CINDERELLA

RPY PAYNES DERBY 46Z  
GREENWOOD WISTERIA LANE  
HC FINAL TIME 407  
RIVERSIDE LADYBIRD 19L

RICHMOND ZODIAC SRD 29Z  
RICHMOND ZANDY SRD 49Z  
WULFS ZERO TURN X292Z  
DIAMOND C ANGELINA

NSC 20K CPM4117650 11/01/2022

DIAMOND C EARTHQUAKE  
**DIAMOND C GOLDMEMBER**  
DIAMOND C ZAHARRA

WULFS ZERO TURN X292Z  
**DIAMOND C CHER**  
PINNACLE'S SHOW GIRL

DIAMOND C BRAVEHEART  
DIAMOND C YOLANDA  
DIAMOND C WEAPON  
WISECAN PHOEBE

WULFS UPGRADE 0500U  
WULFS MYRENE 2332M  
EAFF REGAN 434M  
L-PINE POLLED GWEN

PERF	BW	ADJ 205D	WW	ADJ 365D	EPDS	BW	WW	YW	MILK
	85	609	640	1030		0.3	47	71	23

PERF	BW	ADJ 205D	WW	ADJ 365D	EPDS	BW	WW	YW	MILK
	90	656	700	1024		1.9	64	91	23

- Smooth made
- Nice disposition
- He was a twin
- Out of a beautiful cow family, keep all the females you can
- He is homo polled.

- Out of a great cow family
- Nice hair coat

LOT 16







DIAMOND C *Kreed*

17

PERCENTAGE  
92% PB  
SPH  
HOMO POLLED  
COLOUR  
RED  
DS  
2

BAS 201J

CPM4118325

25/12/2021

COLE ARCHITECT 08A  
**RPY PAYNES CRACKER 17E**  
EDW BEACH BODY

ANCHOR B DONALDSON 34D  
**SIRLOIN HUSH 91H**  
DIAMOND C EUNICE

MRL X-RATED 014X  
COLE MISS LODESTAR 826U  
CHTT WORK TIME 4925W  
TOP MEADOW 24L

WULFS AMAZING BULL T341A  
ANCHOR B BAILEY 21B  
DIAMOND C BRAVEHEART  
DIAMOND C BETHANY

- He is a thick made heifer bull
- Out of a great cow family
- Nice disposition
- He is homo polled
- **Diamond C will be retaining 100 straws of semen for in herd use. At Diamond C's expense and owners convenience.**

PERF	BW	ADJ 205D	WW	ADJ 365D	EPDS	BW	WW	YW	MILK
78	639	660	1144		-0.6	68	102	20	



Sire of Lot 17 - Paynes Cracker 17E



Heifer Bull

LOT 18



DIAMOND C *Kanga*

18

NSC 19K CPM4117649 11/01/2022

PERCENTAGE  
94% PB  
SPH  
HOMO POLLED  
COLOUR  
RED  
DS  
2

SIRLOIN CANDID  
**DIAMOND C GROOT**  
DIAMOND C ENCHANTED

DIAMOND C FREIGHT TRAIN  
**DIAMOND C HALEY**  
DIAMOND C FATE

DC XCALIBUR  
SIRLOIN YIELDER 82Y  
RICHMOND CRUSADER SRD 53C  
DIAMOND C CINDERELLA

SIRLOIN CANDID  
DIAMOND C DREAM GIRL  
GREENWOOD DOUBLE DOWN ET  
DIAMOND C AVON

PERF	BW	ADJ 205D	WW	ADJ 365D	EPDS	BW	WW	YW	MILK
	84	584	560	1037		0.8	49	72	20

- A well balanced heifer bull
- Nice hair coat
- Deep bodied
- He is homo polled.

DIAMOND C *Kona*

19

NSC 37K CPM4117658 24/01/2022

PERCENTAGE  
94% PB  
SPH  
HOMO POLLED  
COLOUR  
RED  
DS  
2

SIRLOIN CANDID  
**DIAMOND C GROOT**  
DIAMOND C ENCHANTED

DIAMOND C EXCITER  
**DIAMOND C HIGH CLASS**  
DIAMOND C CHARLIES ANGEL

DC XCALIBUR  
SIRLOIN YIELDER 82Y  
RICHMOND CRUSADER SRD 53C  
DIAMOND C CINDERELLA

DIAMOND C WAY COOL  
DIAMOND C BRENDA  
EXCEL POLLED POPEYE  
HUNT TEXTURE 129T

PERF	BW	ADJ 205D	WW	ADJ 365D	EPDS	BW	WW	YW	MILK
	96	648	600	1116		2.9	54	81	18

- Moderate in frame
- Recommended for second calvers or cows
- Very quiet
- Lots of depth
- He is homo polled.

LOT 19





Heifer Bull

LOT 20



DIAMOND C *Kabe*

20

NSC 17K CPM4117648 10/01/2022

PERCENTAGE  
94% PB  
SPH  
HOMO POLLED  
COLOUR  
BLACK  
DS  
3.5

SIRLOIN CANDID  
**DIAMOND C GROOT**  
DIAMOND C ENCHANTED

DIAMOND C EXCITER  
**DIAMOND C HARMONY**  
DIAMOND C DAMSEL

DC XCALIBUR  
SIRLOIN YIELDER 82Y  
RICHMOND CRUSADER SRD 53C  
DIAMOND C CINDERELLA

DIAMOND C WAY COOL  
DIAMOND C BRENDA  
DIAMOND C ZEPPLIN  
DIAMOND C ANGEL

PERF	BW	ADJ 205D	WW	ADJ 365D	EPDS	BW	WW	YW	MILK
85	598	580	1040		2.3	52	78	17	

- He will work on heifers
- Lots of depth
- Good muscle expression
- He is homo polled.

DIAMOND C *Kenny*

21

NSC 32K CXM4117655 21/01/2022

PERCENTAGE  
70% PB  
SPH  
HOMO POLLED  
COLOUR  
BLACK  
DS  
2

SIRLOIN CANDID  
**DIAMOND C GROOT**  
DIAMOND C ENCHANTED

DMM STACHE 14C  
**DIAMOND C HEATWAVE**  
DIAMOND C YOLANDA

DC XCALIBUR  
SIRLOIN YIELDER 82Y  
RICHMOND CRUSADER SRD 53C  
DIAMOND C CINDERELLA

DMM STACHE 72Z  
DMM ERROLLINE 6Z  
HC FINAL TIME 407  
RIVERSIDE LADYBIRD 19L

PERF	BW	ADJ 205D	WW	ADJ 365D	EPDS	BW	WW	YW	MILK
84	628	580	1059		0.5	46	63	18	

- Good choice for second calvers or cows
- Moderate in frame
- Good disposition
- He is homo polled.

Limflex

LOT 21





LOT 22



DIAMOND C *Karter*

22

NSC 36K      CPM4117657      24/01/2022

PERCENTAGE  
94% PB  
SPH  
SCURRED  
COLOUR  
RED  
DS  
2

SIRLOIN CANDID  
**DIAMOND C GROOT**  
DIAMOND C ENCHANTED

DIAMOND C EXCITER  
**DIAMOND C HOLLYWOOD**  
DIAMOND C PLEASURE SEEKER

DC XCALIBUR  
SIRLOIN YIELDER 82Y  
RICHMOND CRUSADER SRD 53C  
DIAMOND C CINDERELLA

DIAMOND C WAY COOL  
DIAMOND C BRENDA  
DJ GENTLEMAN IN BLACK  
SRD LABELLE OF THE BALL

- Recommended for second calvers or cows  
- Very quiet

PERF	BW	ADJ 205D	WW	ADJ 365D	EPDS	BW	WW	YW	MILK
87	648	600	1069			1	51	78	22





LOT 23



TWO YEAR OLDS

DIAMOND C *Jackson*

23

NSC 51J      CPM4117619      09/04/2021

PERCENTAGE  
95% PB  
SPH  
HOMO POLLED  
COLOUR  
RED  
DS  
2

DIAMOND C EARTHQUAKE  
**DIAMOND C GOLDMEMBER**  
DIAMOND C ZAHARRA

WULFS ZERO TURN X292Z  
**DIAMOND C CARA**  
DIAMOND C SHOWGIRL

DIAMOND C BRAVEHEART  
DIAMOND C YOLANDA  
DIAMOND C WEAPON  
WISECAN PHOEBE

WULFS UPGRADE 0500U  
WULFS MYRLENE 2332M  
WULFS GUARDIAN 5074G  
WILLMAR FRANCES

**Current WT: 1680 lbs**  
- He is a performance bull  
- Medium framed  
- A very quiet Goldmember son  
- Lots of muscle expression  
- He is homo polled.

PERF	BW	ADJ 205D	WW	ADJ 365D	EPDS	BW	WW	YW	MILK
90	672	700	1074		1.2	62	90	20	



LOT 24



DIAMOND C *Jed*

24

NSC 72J      CPM4117624      27/04/2021

PERCENTAGE  
96% PB  
SPH  
HETERO POLLED  
COLOUR  
RED  
DS  
3.5

DIAMOND C EARTHQUAKE  
**DIAMOND C GOLDMEMBER**  
DIAMOND C ZAHARRA

DIAMOND C WEAPON  
**DIAMOND C ZAHARRA**  
WISECAN PHOEBE

DIAMOND C BRAVEHEART  
DIAMOND C YOLANDA  
DIAMOND C WEAPON  
WISECAN PHOEBE

DIAMOND C SUPERMAN  
DIAMOND C SAVANNAH  
DJ GENTLEMAN IN BLACK  
RIVERSIDE BLACK LADY K24L

**Current WT: 1720 lbs**

- Lots of muscle expression
- Medium framed
- Great cow family, keep all the females you can out of this guy

PERF	BW	ADJ 205D	WW	ADJ 365D	EPDS	BW	WW	YW	MILK
	79	725	700	1135		0.5	66	97	25



LOT 25



DIAMOND C *Jonas*

25

NSC 71J      CPM4117623      23/04/2021

PERCENTAGE  
95% PB  
SPH  
HOMO POLLED  
COLOUR  
BLACK  
DS  
1.5

DIAMOND C EARTHQUAKE  
**DIAMOND C GOLDMEMBER**  
DIAMOND C ZAHARRA

DIAMOND C ZEPPLIN  
**DIAMOND C CLASSY GIRL**  
DIAMOND C ZETTA

DIAMOND C BRAVEHEART  
DIAMOND C YOLANDA  
DIAMOND C WEAPON  
WISECAN PHOEBE

AHCC WESTWIND W544  
HUNT TEXTURE 129T  
DIAMOND C WEAPON  
DIAMOND C SUGAR SUGAR

**Current WT: 1750 lbs**

- A very well built herdsire
- Lots of performance
- Well balanced, deep bodied with deep muscle pattern
- Great disposition
- Out of a great cow family
- He is homo polled.

PERF	BW	ADJ 205D	WW	ADJ 365D	EPDS	BW	WW	YW	MILK
90	692	680	1102		2	66	96	22	



LOT 26



DIAMOND C *Jimmy*

26

NSC 44J      CPM4113346      06/02/2021

PERCENTAGE  
94% PB  
SPH  
HOMO POLLED  
COLOUR  
BLACK  
DS  
2.5

DIAMOND C WAY COOL  
**DIAMOND C EXCITER**  
DIAMOND C BRENDA

GREENWOOD DOUBLE DOWN ET  
**DIAMOND C FAME**  
DIAMOND C CAPRICORN

WULFS SPACE SHIP 3223S  
DIAMOND C SHOWGIRL  
DIAMOND C ZEPPLIN  
DIAMOND C YOUR SO FINE  
RPY PAYNES DERBY 46Z  
GREENWOOD WISTERIA LANE  
DIAMOND C WAYLON  
HUNTKISSES AND WISHES 29W

**Current WT: 1750 lbs**

- This guy is a power bull
- Medium framed
- Good disposition
- Deep bodied with lots of muscle expression
- He is homo polled.

PERF	BW	ADJ 205D	WW	ADJ 365D	EPDS	BW	WW	YW	MILK
	89	645	585	1029		2.4	56	88	21



LOT 27



DIAMOND C *Jennings*

27

NSC 67J CPM4118157 19/04/2021

PERCENTAGE  
95% PB  
SPH  
SCURRED  
COLOUR  
RED  
DS  
3.5

DIAMOND C EARTHQUAKE  
**DIAMOND C GOLDMEMBER**  
DIAMOND C ZAHARRA

QUALLY-T CAPTAIN AMERICA  
**QUALLY-T FIFTY SHADES OF RED**  
QUALLY - T ZEE

DIAMOND C BRAVEHEART  
DIAMOND C YOLANDA  
DIAMOND C WEAPON  
WISECAN PHOEBE

WULFS XTRACTOR X233X  
QUALLY-T PEEBLES  
STONEVIEW UTMOST  
QUALLY-T TWIST & SHOUT

PERF	BW	ADJ 205D	WW	ADJ 365D	EPDS	BW	WW	YW	MILK
	96	712	680	1139		3.8	71	101	22

**Current WT: 1965 lbs**

- Lots of depth of body
- Medium framed

DIAMOND C *Joey*

28

NSC 73J CPM4117625 28/04/2021

PERCENTAGE  
96% PB  
SPH  
DOUBLE POLLED  
COLOUR  
RED  
DS  
3.5

DIAMOND C EARTHQUAKE  
**DIAMOND C GOLDMEMBER**  
DIAMOND C ZAHARRA

DIAMOND C WAYLON  
**DIAMOND C AVON**  
LNA NORTH STAR 236N

DIAMOND C BRAVEHEART  
DIAMOND C YOLANDA  
DIAMOND C WEAPON  
WISECAN PHOEBE

DIAMOND C SUPERMAN  
DIAMOND C SUGAR SUGAR  
DENISON POLLED PUB  
LNA LINGO 37L

PERF	BW	ADJ 205D	WW	ADJ 365D	EPDS	BW	WW	YW	MILK
	89	728	700	1155		2.4	66	95	25

**Current WT: 1880 lbs**

- Very sound Goldmember son
- A power bull
- Larger framed

LOT 28





LOT 29



29

DIAMOND C *John Wayne*

NSC 14J CPM4112577 06/01/2021

PERCENTAGE  
95% PB  
SPH  
HOMO POLLED (T)  
COLOUR  
RED  
DS  
2

DIAMOND C EARTHQUAKE  
**DIAMOND C GOLDMEMBER**  
DIAMOND C ZAHARRA

GREENWOOD DOUBLE DOWN ET  
**DIAMOND C GIGI**  
DIAMOND C ZETTA

DIAMOND C BRAVEHEART  
DIAMOND C YOLANDA  
DIAMOND C WEAPON  
WISECAN PHOEBE

RPY PAYNES DERBY 46Z  
GREENWOOD WISTERIA LANE  
DIAMOND C WEAPON  
DIAMOND C SUGAR SUGAR

PERF	BW	ADJ 205D	WW	ADJ 365D	EPDS	BW	WW	YW	MILK
	84	619	610	1190		1.8	58	87	24

**Current WT: 1550 lbs**

- He is homo polled.
- Great temperament
- Very deep bodied
- Moderate framed

30

DIAMOND C *Jones*

NSC 45J CPM4113347 13/02/2021

PERCENTAGE  
95% PB  
SPH  
HORNED  
COLOUR  
RED  
DS  
1.5

DIAMOND C WAY COOL  
**DIAMOND C EXCITER**  
DIAMOND C BRENDA

DIAMOND C WEAPON  
**DIAMOND C ZETTA**  
DIAMOND C SUGAR SUGAR

WULFS SPACE SHIP 3223S  
DIAMOND C SHOWGIRL  
DIAMOND C ZEPPLIN  
DIAMOND C YOUR SO FINE

DIAMOND C SUPERMAN  
DIAMOND C SAVANNAH  
DIAMOND C PERFECTGENTLEMAN  
ANLC LUCILLE 1264L

PERF	BW	ADJ 205D	WW	ADJ 365D	EPDS	BW	WW	YW	MILK
	94	678	630	1053		2.9	56	86	22

**Current WT: 1750 lbs**

- Larger framed
- Deep bodied
- Good temperament
- A well put together cow bull

LOT 30





LOT 31



DIAMOND C *Jax*

31

NSC 77J CPM4117627 01/05/2021

PERCENTAGE  
92% PB  
SPH  
DOUBLE POLLED  
COLOUR  
RED  
DS  
2.5

DIAMOND C EARTHQUAKE  
**DIAMOND C GOLDMEMBER**  
DIAMOND C ZAHARRA

COLE WULF HUNT  
**HUNT KISSES AND WISHES 29W**  
HUNT TEXTURE 129T

DIAMOND C BRAVEHEART  
DIAMOND C YOLANDA  
DIAMOND C WEAPON  
WISECAN PHOEBE

COLE FIRST DOWN 46D  
COLE CATALINA 3309C  
RUNL RUSH 306R  
HUNT POWDER 179P

PERF	BW	ADJ 205D	WW	ADJ 365D	EPDS	BW	WW	YW	MILK
	97	722	675	1136		2.8	68	98	18

**Current WT: 1820 lbs**

- Great cow family, his dam has been on the farm for 15 years
- Very deep bodied bull

DIAMOND C *Jack*

32

NSC 57J CPM4117620 11/04/2021

PERCENTAGE  
94% PB  
SPH  
DOUBLE POLLED  
COLOUR  
RED  
DS  
2.5

SIRLOIN CANDID  
**DIAMOND C GROOT**  
DIAMOND C ENCHANTED

DIAMOND C EARTHQUAKE  
**DIAMOND C GOLDIE**  
DIAMOND C ANGEL

DC XCALIBUR  
SIRLOIN YIELDER 82Y  
RICHMOND CRUSADER SRD 53C  
DIAMOND C CINDERELLA

DIAMOND C BRAVEHEART  
DIAMOND C YOLANDA  
EXCEL POLLED POPEYE  
RIVERSIDE POLLED JILL

PERF	BW	ADJ 205D	WW	ADJ 365D	EPDS	BW	WW	YW	MILK
	76	637	600	1064		0.9	57	82	16

**Current WT: 1550 lbs**

- He will work on heifers
- Birthweight of 76lbs
- Lots of depth

LOT 32

*Heifer Bull*





LOT 33

Heifer Bull



DIAMOND C *Johnny*

33

NSC 83J      CPM4117626      18/05/2021

PERCENTAGE  
94% PB  
SPH  
HOMO POLLED  
COLOUR  
RED  
DS  
2.5

SIRLOIN CANDID  
**DIAMOND C GROOT**  
DIAMOND C ENCHANTED

DIAMOND C EARTHQUAKE  
**DIAMOND C GIANA**  
DIAMOND C BRENDA

DC XCALIBUR  
SIRLOIN YIELDER 82Y  
RICHMOND CRUSADER SRD 53C  
DIAMOND C CINDERELLA

DIAMOND C BRAVEHEART  
DIAMOND C YOLANDA  
DIAMOND C ZEPPLIN  
DIAMOND C YOUR SO FINE

PERF	BW	ADJ 205D	WW	ADJ 365D	EPDS	BW	WW	YW	MILK
	80	716	580	1135		0.2	56	84	20

**Current WT: 1520 lbs**

- He will work on heifers
- 80lb birthweight
- Lots of depth of rib
- He is homo polled.





LOT 34



DIAMOND C *Justin*

34

NSC 65J CPM4117622 18/04/2021

PERCENTAGE  
94% PB  
SPH  
DOUBLE POLLED  
COLOUR  
BLACK  
DS  
3.5

DIAMOND C EARTHQUAKE  
**DIAMOND C GOLDMEMBER**  
DIAMOND C ZAHARRA

WULFS ZERO TURN X292Z  
**DIAMOND C CONNIE**  
PINNACLE'S ZIAMOND 5Z

DIAMOND C BRAVEHEART  
DIAMOND C YOLANDA  
DIAMOND C WEAPON  
WISECAN PHOEBE

WULFS UPGRADE 0500U  
WULFS MYRENE 2332M  
AHCC WESTWIND W544  
PINNACLE'S REGAL

PERF	BW	ADJ 205D	WW	ADJ 365D	EPDS	BW	WW	YW	MILK
	92	667	670	1081		2	62	89	22

Current WT: 1720 lbs

- Lots of performance
- Tons of middle
- Medium framed

DIAMOND C *Jimmie*

35

NSC 13J CPM4117618 06/01/2021

PERCENTAGE  
93% PB  
SPH  
SCURRED  
COLOUR  
BLACK  
DS  
3

GREENWOOD DOUBLE DOWN ET  
**DIAMOND C GOLD RUSH**  
DIAMOND C YOLANDA

WULFS ZERO TURN X292Z  
**DIAMOND C CINDERELLA**  
DIAMOND C ANGELINA

RPY PAYNES DERBY 46Z  
GREENWOOD WISTERIA LANE  
HC FINAL TIME 407  
RIVERSIDE LADYBIRD 19L

WULFS UPGRADE 0500U  
WULFS MYRENE 2332M  
EXCEL POLLED POPEYE  
HUNT TEXTURE 129T

PERF	BW	ADJ 205D	WW	ADJ 365D	EPDS	BW	WW	YW	MILK
	80	535	580			-0.6	35	51	24

Current WT: 1580 lbs

- Medium framed
- Heavy muscle
- Out of a great cow family
- Keep all the females you can off this guy

LOT 35





LOT 36



DIAMOND C *Jockey*

36

NSC 60J CPM4117621 16/04/2021

PERCENTAGE  
95% PB  
SPH  
HOMO POLLED  
COLOUR  
BLACK  
DS  
3.5

DIAMOND C EARTHQUAKE  
**DIAMOND C GOLDMEMBER**  
DIAMOND C ZAHARRA

GREENWOOD DOUBLE DOWN ET  
**DIAMOND C FRANZISKA**  
DIAMOND C BAHAMAS

DIAMOND C BRAVEHEART  
DIAMOND C YOLANDA  
DIAMOND C WEAPON  
WISECAN PHOEBE  
RPY PAYNES DERBY 46Z  
GREENWOOD WISTERIA LANE  
EXCEL POLLED POPEYE  
SRD LABELLE OF THE BALL

PERF	BW	ADJ 205D	WW	ADJ 365D	EPDS	BW	WW	YW	MILK
	84	667	640	1110		1.7	65	96	21

Current WT: 1650 lbs

- Medium framed bull
- Good muscle expression
- He is homo polled.

DIAMOND C *Juno*

37

NSC 86J CPM4117628 02/06/2021

PERCENTAGE  
94% PB  
SPH  
HOMO POLLED  
COLOUR  
DOUBLE BLACK  
DS  
3

RICHMOND GRAND DUKE SRD 8D  
**RICHMOND FONZIE SRD 28F**  
RICHMOND COCKTAIL SRD 71C

WULFS YANKEE K689Y  
**DIAMOND C NORTHERN BELLE**  
DIAMOND C PEACHES

RICHMOND XCELLER SRD 137X  
RICHMOND ZETA-JONES SRD 10Z  
RPY PAYNES DERBY 46Z  
RICHMOND UNBELIEVEABLE SRD 38U  
HUNT MR JOCK 44J  
WULFS SOLOIST 6284S  
DJ GENTLEMAN IN BLACK  
WILMAR DELIGHT

PERF	BW	ADJ 205D	WW	ADJ 365D	EPDS	BW	WW	YW	MILK
	90	676	550	1127		3.6	62	92	27

Current WT: 1720 lbs

- Medium in frame
- Picture doesn't do him justice, be sure to watch his video
- Good muscle expression
- He is homo polled.

LOT 37





LOT 38



DIAMOND C *Jaguar*

38

NSC 20J CPM4112580 13/01/2021

PERCENTAGE  
94% PB  
SPH  
SCURRED  
COLOUR  
BLACK  
DS  
2.5

DIAMOND C WAY COOL  
**DIAMOND C EXCITER**  
DIAMOND C BRENDA

WULFS SPACE SHIP 3223S  
DIAMOND C SHOWGIRL  
DIAMOND C ZEPPLIN  
DIAMOND C YOUR SO FINE

DIAMOND C WAY COOL  
**DIAMOND C FRISKY**  
DIAMOND C CALI MAY

WULFS SPACE SHIP 3223S  
DIAMOND C SHOWGIRL  
DIAMOND C ZEPPLIN  
WISECAN PHOEBE

PERF	BW	ADJ 205D	WW	ADJ 365D	EPDS	BW	WW	YW	MILK
80	566	566	560			1.2	45	73	19

**Current WT: 1715 lbs**  
- Medium framed  
- A well balanced Exciter son

DIAMOND C *James*

39

NSC 89J UNREGISTERED 15/07/2021

SPH  
POLLED  
COLOUR  
BLACK  
DS  
3.5

RICHMOND GRAND DUKE SRD 8D  
**RICHMOND FONZIE SRD**  
RICHMOND COCKTAIL SRD 71C

RICHMOND XCELLER SRD 137X  
RICHMOND ZETA-JONES SRD 10Z  
RPY PAYNES DERBY 46Z  
RICHMOND UNBELIEVEABLE SRD 38U

DIAMOND C BRAVEHEART  
**DIAMOND C EVA**  
PINNACLE'S SHOW GIRL

EXCEL POLLED POPEYE  
DIAMOND C UNDIES  
EAFF REGAN 434M  
L-PINE POLLED GWEN

PERF	BW	WW	ADJ 365D
92	550	1110	

**Current WT: 1430 lbs**  
- He is a purebred, just unregistered  
- Good muscle expression  
- The youngest two year old in the offering

LOT 39





LOT 40

*Limflex*



SIRLOIN *Jagger*

SIRLOIN *Joker*

40

41

SFL 61J CXM4118429 21/01/2021

SFL 207J UNREGISTERED 17/04/2021

PERCENTAGE  
70% PB  
SPH  
DOUBLE POLLED  
COLOUR  
RED  
DS  
2

COTTAGE LAKE BORDER AGENT  
**BOSS LAKE BORDER AGENT 967G ET**  
GREENWOOD PLD ZOOM BLOOM

CFLX WILD CARD  
LAL MARILYN MONROE 42W  
WULFS REVOLVER 1219R  
GREENWOOD PLD TALKINDIRTY

IMPERIAL BONANZA 4B  
**SIRLOIN FLAMEPROOF**  
SIRLOIN ARIEL

S A V 707 RITO 9969  
LLLL TESSA LADY 37T  
DC XCALIBUR  
SIRLOIN YIELDER 97Y

PERCENTAGE  
70% PB  
SPH  
DOUBLE POLLED  
COLOUR  
BLACK  
DS  
2

COTTAGE LAKE BORDER AGENT  
**BOSS LAKE BORDER AGENT 967G ET**  
GREENWOOD PLD ZOOM BLOOM

CFLX WILD CARD  
LAL MARILYN MONROE  
WULFS REVOLVER 1219R  
GREENWOOD PLD TALKINDIRTY

DIAMOND C CHAPLIN  
**RICHMOND FIRSTRATE SRD 214F**  
RICHMOND ANGUS GIRL SRD 214A

DIAMOND C ZEPPLIN  
DIAMOND C ZAIDA  
NORDAL TRENDSETTER  
LLB BLUE LASS 192U

PERF	BW	ADJ 205D	WW	ADJ 365D	EPDS	BW	WW	YW	MILK
85	609	723	1067		3.1	66	100	25	

PERF	BW	WW	365D
71	558	1036	

**Current WT: 1900 lbs**

- A limflex option
- Dark cherry red
- Good disposition
- Well balanced, lots of depth and muscle

**Current WT: 1705 lbs**

- A limflex option
- Moderate in frame
- Tons of depth

LOT 41

*Limflex*



Sire of Lot 10, 40 & 41  
**Boss Lake Border Agent 967G ET**





LOT 42



DIAMOND C *Kitty*

DIAMOND C *Kamila*

42

43

NSC 16K CPF4117787 09/01/2022

NSC 33K CPF4117793 21/01/2022

PERCENTAGE  
94% PB  
SPH  
PENDING  
COLOUR  
RED  
DS  
2

DIAMOND C EARTHQUAKE  
**DIAMOND C GOLDMEMBER**  
DIAMOND C ZAHARRA

DIAMOND C ZEPPLIN  
**DIAMOND C DIAMOND EYES**  
DIAMOND C X-ALTED

DIAMOND C BRAVEHEART  
DIAMOND C YOLANDA  
DIAMOND C WEAPON  
WISECAN PHOEBE

AHCC WESTWIND W544  
HUNT TEXTURE 129T  
DIAMOND C SUPERMAN  
RIVERSIDE LADYBIRD 19L

PERCENTAGE  
94% PB  
SPH  
PENDING  
COLOUR  
BLACK  
DS  
1

DIAMOND C EARTHQUAKE  
**DIAMOND C GOLDMEMBER**  
DIAMOND C ZAHARRA

DIAMOND C ZEPPLIN  
**DIAMOND C CARLINA**  
DIAMOND C WILDCHILD

DIAMOND C BRAVEHEART  
DIAMOND C YOLANDA  
DIAMOND C WEAPON  
WISECAN PHOEBE

AHCC WESTWIND W544  
HUNT TEXTURE 129T  
RICHMOND TROOPER SRD 83T  
WISECAN PHOEBE

PERF	BW	ADJ 205D	WW	ADJ 365D	EPDS	BW	WW	YW	MILK
93	624	670	940		2.6	68	100	22	

PERF	BW	ADJ 205D	WW	ADJ 365D	EPDS	BW	WW	YW	MILK
92	649	665	1017		2.6	68	100	27	

"Diamond C Kitty 16K" is our first female on offer and she is definitely a wow factor! Not only does she come out of a great cow family, but she has a great disposition and overall makeup. She is a very feminine, long bodied and easy fleshing female. We will be sad to see her go but are excited for "Kitty" to go on and make a great addition to another herd. Be sure to check her out sale day!

Retaining the right to one successful flush at the buyers convenience.

"Diamond C Kamila 33K" has been a pen favourite since the beginning. She is very eye appealing, deep sided, and smooth made. We simply cannot say enough good things about this girl. Her dam "Diamond C Carlina" continues to raise us standout progeny and we expect the same from her daughter. "Kamila" is exactly the type of female we strive to produce at Diamond C. Don't miss out on this opportunity!

Retaining the right to one successful flush at the buyers convenience.

LOT 43



HEIFERS



LOT 44



DIAMOND C *Kandy*

44

NSC 1K CPF4117780 01/01/2022

PERCENTAGE  
95% PB  
SPH  
PENDING  
COLOUR  
RED  
DS  
2

DIAMOND C EARTHQUAKE  
**DIAMOND C GOLDMEMBER**  
DIAMOND C ZAHARRA

SIRLOIN CANDID  
**DIAMOND C FIONA**  
DIAMOND C DAISEY

DIAMOND C BRAVEHEART  
DIAMOND C YOLANDA  
DIAMOND C WEAPON  
WISECAN PHOEBE

DC XCALIBUR  
SIRLOIN YIELDER 82Y  
DIAMOND C BOB SEGER  
DIAMOND C U-BETCHA

PERF	BW	ADJ 205D	WW	ADJ 365D	EPDS	BW	WW	YW	MILK
78	640	695	966		0	69	98	21	

"Diamond C Kandy 1K" is another stand out female. She is wide topped, with lots of power and shape, but also maintains the desirable feminine look. "Kandy" has loads of potential and there is no doubt she will raise impressive progeny. This girl also has an awesome disposition and thick hair coat, which is just icing on the cake. She is a great female that will fit well in any program!

DIAMOND C *Karma*

45

NSC 18K CPF4117788 10/01/2022

PERCENTAGE  
94% PB  
SPH  
PENDING  
COLOUR  
BLACK  
DS  
2

SIRLOIN CANDID  
**DIAMOND C GROOT**  
DIAMOND C ENCHANTED

DIAMOND C FREIGHT TRAIN  
**DIAMOND C HOLLY**  
DIAMOND C FAME

DC XCALIBUR  
SIRLOIN YIELDER 82Y  
RICHMOND CRUSADER SRD 53C  
DIAMOND C CINDERELLA

SIRLOIN CANDID  
DIAMOND C DREAM GIRL  
GREENWOOD DOUBLE DOWN ET  
DIAMOND C CAPRICORN

PERF	BW	ADJ 205D	WW	ADJ 365D	EPDS	BW	WW	YW	MILK
84	541	530	857		0	49	75	19	

"Diamond C Karma 18K" will be sure to catch your eye. She is very fancy yet functional. "Karma" takes after her dam and is a moderate framed, attractive female. She is our only "Diamond C Groot" daughter on offer this year. "Groot" is backed by a great cow family that goes back to our famous "Diamond C Angelina". We are confident "Karma" will go on and continue to turn heads. If you are looking for a very showy, hairy, clean fronted, and all around eye appealing female, this is your gal!

LOT 45





LOT 46



DIAMOND C *Kashmere*

46

NSC 4K CPF4117784 01/01/2022

PERCENTAGE  
95% PB  
SPH  
PENDING  
COLOUR  
RED  
DS  
2

DIAMOND C EARTHQUAKE  
**DIAMOND C GOLDMEMBER**  
DIAMOND C ZAHARRA

GREENWOOD DOUBLE DOWN ET  
**DIAMOND C FATE**  
DIAMOND C AVON

DIAMOND C BRAVEHEART  
DIAMOND C YOLANDA  
DIAMOND C WEAPON  
WISECAN PHOEBE

RPY PAYNES DERBY 46Z  
GREENWOOD WISTERIA LANE  
DIAMOND C WAYLON  
LNA NORTH STAR 236N

PERF	BW	ADJ 205D	WW	ADJ 365D	EPDS	BW	WW	YW	MILK
87	614	660	940		2.5	68	98	26	

"Diamond C Kashmere 4K" is another favourite that we admire for her depth and power. She is square made and moves really well. "Kashmere" still carries that feminine look and likes to show herself off. We believe that this is a female that will go on and be a very profitable cow. We expect progeny that will excel in any direction. Add "Diamond C Kashmere 4K" to your herd with confidence!

DIAMOND C *Kiara*

47

NSC 45K CPF4117795 11/02/2022

PERCENTAGE  
94% PB  
SPH  
PENDING  
COLOUR  
RED  
DS  
2.5

GREENWOOD DOUBLE DOWN ET  
**DIAMOND C GOLD RUSH**  
DIAMOND C YOLANDA

DIAMOND C WEAPON  
**DIAMOND C ZERLINDA**  
EDENS BLACK CIERRA

RPY PAYNES DERBY 46Z  
GREENWOOD WISTERIA LANE  
HC FINAL TIME 407  
RIVERSIDE LADYBIRD 19L

DIAMOND C SUPERMAN  
DIAMOND C SAVANNAH  
JCL BLACK CLOUD  
CORN CIERRA 296J

PERF	BW	ADJ 205D	WW	ADJ 365D	EPDS	BW	WW	YW	MILK
92	686	640	991		1.7	60	87	26	

"Diamond C Kiara 45K" is a very functionally made female. She is our only "Diamond C Gold Rush" heifer in this sale offering. She possesses many of his attributes such as, lots of depth of rib and great muscle expression. Her dam "Diamond C Zerlinda" is 11 years old and has raised us many greats over the years. "Kiara" is backed with power and longevity and we are looking forward to see how she performs in another herd!

LOT 47

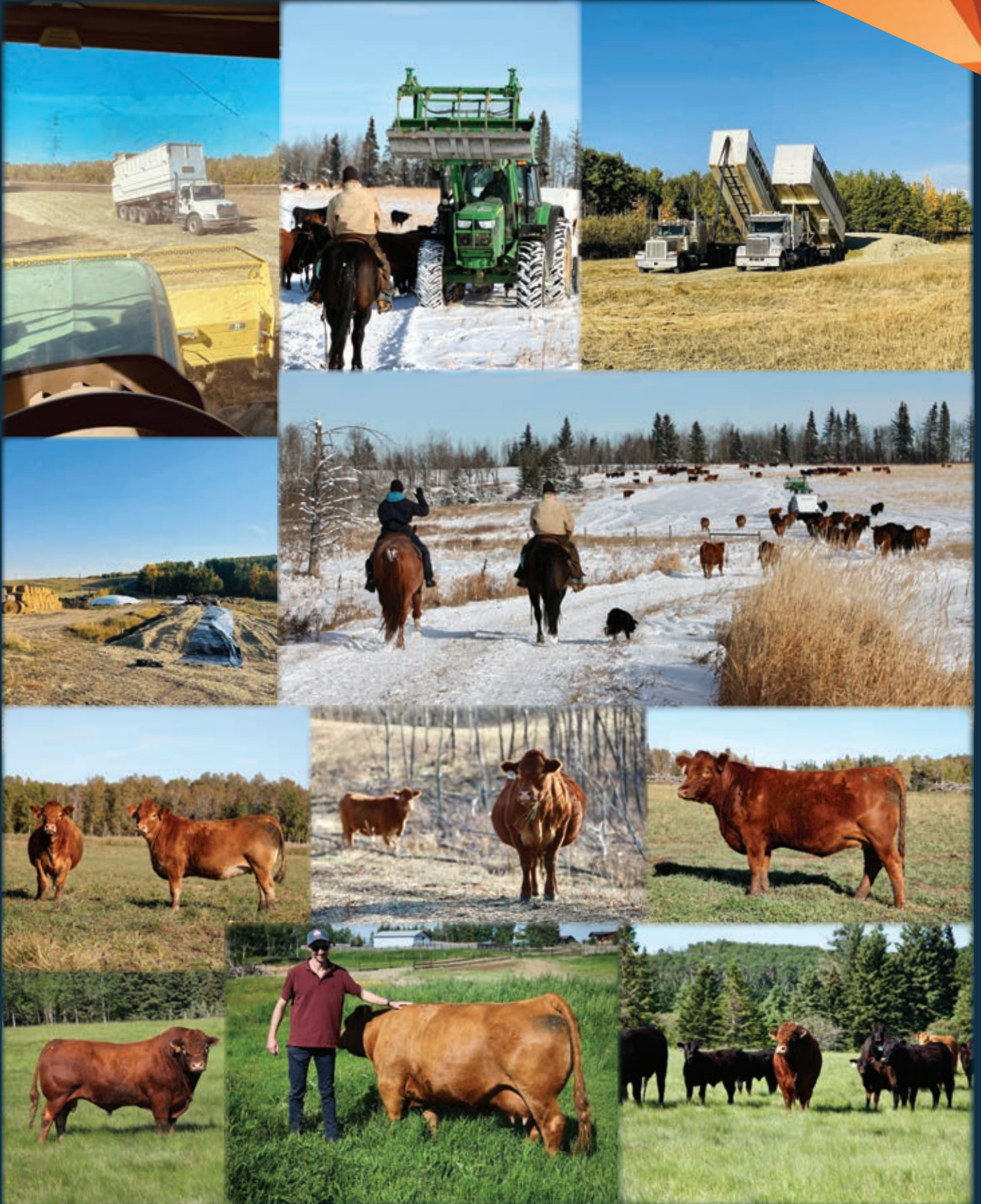








# AROUND THE FARM



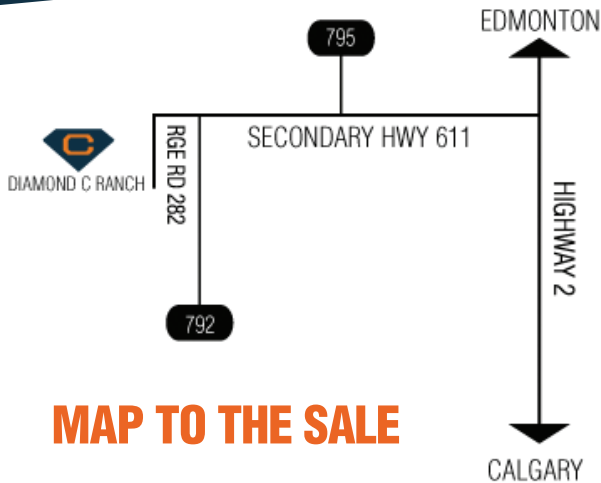


A TRIBUTE TO  
*Joe Farris*

Joe Farris has announced his retirement and this will be our last sale with him working as one of our ringmen. For the past 22 years Joe has been an integral part of our Bull Sales. He's a kind, gentle soul with a whole bunch of pizzazz in the sale ring. We have loved his flair, appreciated his professionalism and integrity and will miss him bunches. We wish you the best, Joe, and we want you to know that you're one of the good ones! Thanks for being part of our journey.







### TERMS & CONDITIONS TERMS:

The terms of this sale are cash or cheque in Canadian Funds at par immediately following the sale. The right of ownership shall not pass until after settlement is made. All settlements must be made before any livestock will be released.

### ABSENTEE BIDS:

Mailed or telephone bids shall be handled in the most confidential manner if you are unable to attend the sale in person.

### INSURANCE:

Ownership risk to purchaser commences when the auctioneer's hammer falls. Insurance is available at the sale.

### ANNOUNCEMENTS:

Any announcement made from the auction block takes precedence over the printed matter in the catalogue.

### CERTIFICATES:

If desired, certificates of registry and transfer on each bull shall be provided by the seller to the buyer without charge after settlement has been made. Please leave transfer instructions at the clerk's desk.

### BREEDER'S GUARANTEE:

The seller warrants clear title to and the right to sell each bull offered for sale. All bulls offered for sale are warranted to be sound, however; the seller is not responsible for damage caused by foreign objects after the bull has been sold nor sickness that was not apparent at the time of sale.

### BREEDING GUARANTEE:

We, the sellers, have done everything possible to assure you, the buyer, that every bull in this sale will be a breeder. However, should a problem arise, please inform the seller so the problem can be resolved. The purchaser shall have six months from the date the bull reaches fourteen months of age to report, in writing, to the seller that the bull is a non-breeder, providing of course, that the bull has been maintained in satisfactory breeding condition. Each consignor will have six months to prove the bull a breeder after the time of report. In the event a bull is a non breeder the situation will be handled by either a replacement, credit or money back. In no case will an adjustment be made for more than the purchase price of that particular bull. At no time will a buyer's reimbursement or credit ever exceed the buyer's purchase price of the bull, semen or female. No guarantee is given that semen collected from any bull in this sale will freeze or be suitable for artificial insemination.

### ACCIDENTS:

Although every precaution will be taken to protect the safety and comfort of buyers, neither sales management, auctioneer, nor consignors assume any responsibility in this matter and disclaims any liability, legal, or otherwise, in the event of loss of property.

### DELIVERY:

Bulls are able to remain at the ranch at the purchaser's risk and we strongly recommend that the bull be insured. Individual arrangements for delivery and feeding can be made by talking to Neil prior to or on sale day.

### RIGHTS AND OBLIGATIONS:

The above terms and conditions of the sale shall constitute a contract between the buyer and seller and be equally binding to both. Resale of livestock following purchase in this sale shall constitute a separate transaction and the rights and obligations of the two parties connected there to are not covered by the terms and conditions of this sale.

### DISCLAIMER:

While we believe the material contained in this book to be correct at the time of printing, we cannot accept responsibility to any errors herein, regardless of the cause.

### TESTS:

All homo polled tests were conducted and determined by Neogen. We do not guarantee results.

Vold, Jones & Vold Auction Co. Ltd. is proud to announce that they are moving to total internet service. They are now associated with Online Ringman, the largest internet company in the world.

**ONLY LIVE ELECTRONIC AUCTION THAT GIVES YOU THE LIVE RING LIVE VIDEO AND LIVE AUCTIONEER OF YOUR CATTLE**

If you are interested in purchasing bulls, please contact Craig Jacklin at 403-793-1453



**RETURN UNDELIVERABLE**

**CANADIAN ADDRESSES TO:**

NEIL CHRISTIANSEN  
BOX 4511  
PONOKA, AB  
T4J 1S1



CREATED BY



**THANK YOU TO ALL OF OUR CUSTOMERS**  
FOR YOUR CONTINUED SUPPORT